

STATE KOLSTER DEALERS

KPO NIGHT TO BE CELEBRATED OVER PACIFIC NETWORK

Program by Abas String Quartet Will Feature Event; Many Noted Soloists to Be Heard Tonight.

KPO night will be celebrated when the Hale-Chronicle station presents a program tonight over the Pacific Coast network for the first time.

A program of unusual scope has been arranged and will include, the Abas String Quartet under direction of Nathan Abas, violin soloist. Abas is a Hollander by birth and has been associated with many of the large symphony organizations in this country and abroad.

Others of the quartet are Michel Tenha, soloist of the San Francisco Symphony Orchestra; Romain Joseph Varney, violin soloist, and Julia Brodsky, former member of the Imperial Grand Opera Orchestra in Russia.

Allan Wilson, who will sing three solos during the KPO network program, is well known to Pacific Coast radio listeners and will be remembered for his remarkable singing with the Loring Club. Two numbers of chamber music by this fine quartet will be the quartet in E Flat Major of Dittersdorf and Three Novelettes of Glazounov, both of which are well suited for strings.

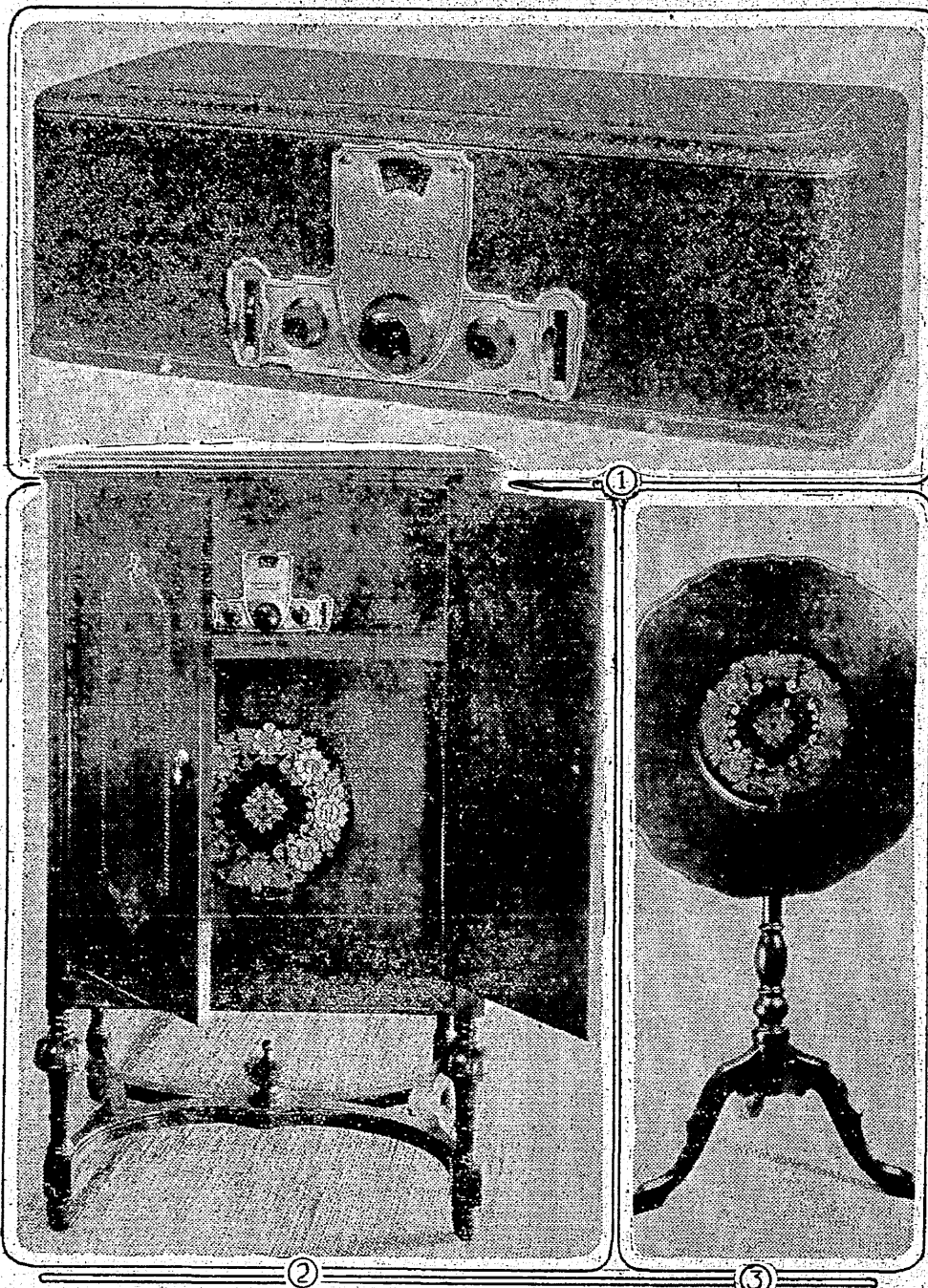
NEW LOUD SPEAKERS GREATLY IMPROVED

Radio Receivers Should Be Judged According to Horn, Says Expert.

Radio receivers will be judged in the future more according to the speaker, which has been greatly improved this year, than by the appearance of the set or its name. In the opinion of Dr. F. A. Kolster, former head of the United States Bureau of Standards radio laboratory, who is designing Kolster sets and speakers in his laboratory at Palo Alto, Cal.

"Those who have radio sets are finding that the quality of reproduction can be improved noticeably by using a power cone of the latest design at a cost much lower than that of buying a new set with a built-in unit which uses the new method of reproduction," he said. "A substantial improvement in loud speakers has been effected recently through the successful use of the electro-dynamic principle,

"BANDBOX" SET CAN ALSO BE USED IN CONSOLE



Latest Products of Crosley Factory.

1—Crosley is building only one chassis this year, known as the "Bandbox." 2—The "Bandbox" will fit into several styles of consoles, such as the one shown here. 3—The new Crosley "Tilt-table" speaker.

EIGHT DESIGNS MADE IN SAME RADIO SET

"Bandbox" and Other Types Give Buyers Opportunity to Make Artistic Selection.

To make available to the would-be listener his choice of eight distinct receiving outfits, while standardizing in manufacture on but one type of set, is the unusual policy of the Crosley Radio Corporation, Cincinnati, Ohio, for this season.

This is achieved by making the Bandbox, as the new set is called, so that it can be easily removed from the metal cabinet in which it is furnished and inserted into any one of three consoles, designed and built by expert furniture manufacturers and approved by the Crosley Corporation. The Bandbox is made in two models, one for battery operation and one for light socket operation. Except for a few necessary differences, these models are identical.

In conjunction with the AC lamp

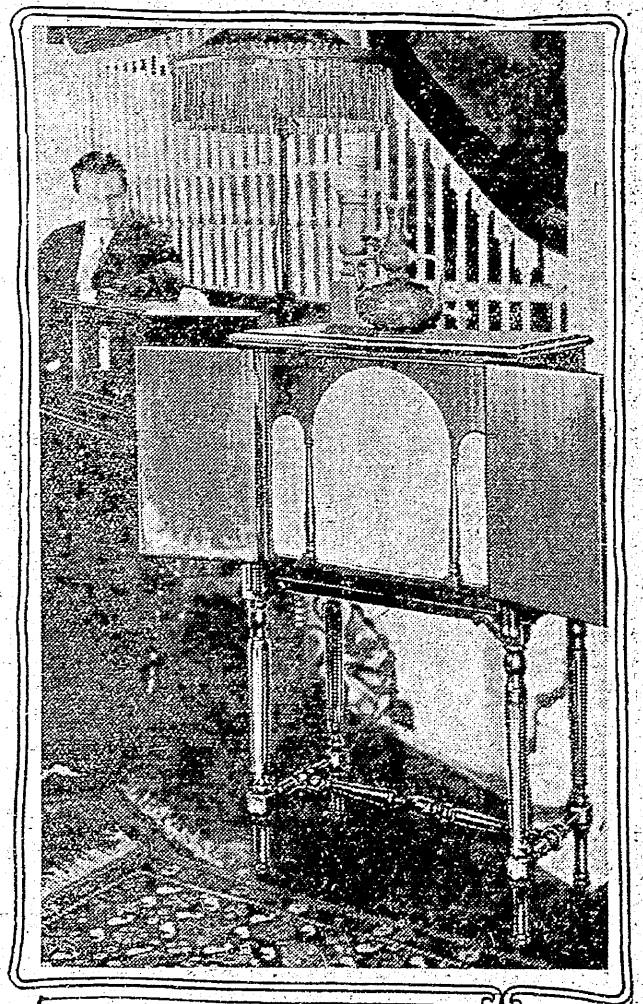
socket model, an A. B. and C power converter, housed in a metal case of similar finish to the Bandbox, is used. Thus there are two sets with metal cabinets for table use. Each of these sets, by a strikingly simple process, can be taken from the metal cabinet and placed in one of the art-furniture models.

This gives the buyer his choice among a battery-operated set in metal cabinet and three consoles and a lamp socket-operated set in the same four styles. There are numerous other furniture models, which will accommodate these compact receivers in addition to the three approved designs.

This policy permits the fullest use of mass production methods, reducing the cost of manufacture and consequently the price of the sets to the minimum. The Bandbox is a six-tube set and is completely shielded and mounted independently of the metal box in which it is inclosed. By releasing four screws, the chassis can be taken from the metal box. The enclosure, also, can be removed very easily and placed on the furniture model.

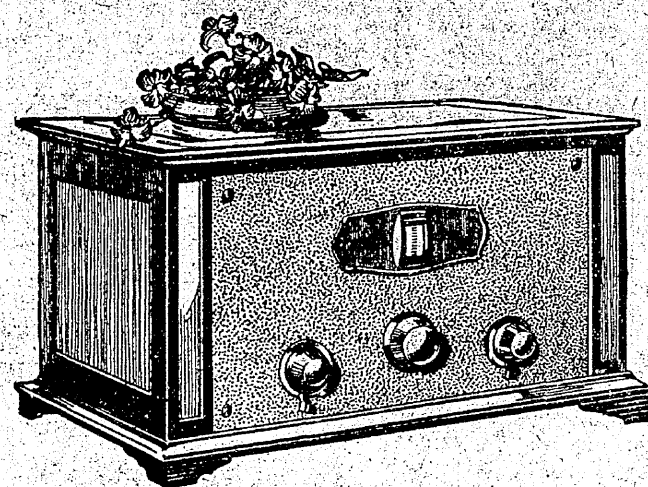
This line also includes three improved Musicones, one constructed like a tilt-top table and finished to harmonize with the frosted brown crystalline effect of the Bandbox set.

HERE'S NEW LOUDSPEAKER



Kolster "Powercone."

The latest product of the Kolster factory is a high-power cone speaker, which operates from the light socket and supplies "B" current to the receiving set. It is said to give extremely natural tones.



6-D \$89.50

Less Tubes and Batteries

Have a Kolster Demonstration

Your Kolster dealer in your community will gladly arrange a demonstration—Ask About the Kolster.

Aberdeen

THOMPSON RADIO CO.

Edmonds

H. STROM

North Bend

KNIERM RADIO & ELECTRIC SHOP

Shelton

A. L. O'NEIL

Alderwood Manor

M. W. CRAIG

Ellensburg

ELLENSBURG HARDWARE CO.

Oak Harbor

JUDSON MOTOR CO.

Snohomish

G. G. PAINE

Anacortes

PIONEER RADIO SHOP Frank Morley

Elma

D. A. PEARSON

Olympia

A. T. RABECK MUSIC CO. 415 4th Ave.

So. Bend

WHEELER RADIO SERVICE

Arlington

ELLIS MUSIC HOUSE

Entiat

ENTIAT DRUG CO.

Orting

ROSSO MOTOR CO.

Sumas

HENDRICKSON JEWELRY CO.

Bellingham

W. M. CALHOUN

Enumclaw

RADIO ELECTRIC CO.

Point Roberts

G. H. WATERS CO.

Sumner

SUMNER CIGAR COMPANY J. T. STAHLHUT

Bothell

BOTHELL PHARMACY S. G. Crawford

Fall City

VALLEY RADIO CO.

Port Angeles

SANDERSON'S RADIO SHOP E. Sanderson

Tacoma

RHODES BROTHERS 11th and Broadway

Bremerton

CLARK'S MUSIC & RADIO CO.

Friday Harbor

FRIDAY HARBOR LIGHT & POWER CO.

Port Orchard

UNION MOTOR CO.

Tacoma

THE LIGHTHOUSE 1113 "K" ST.

Centralia

PRICE MUSIC HOUSE

Hoquiam

McGEE FURNITURE CO.

Port Townsend

H. F. DONOVAN RADIO CO. H. F. Donovan

South Tacoma

BRICKLEY'S RADIO SERVICE 5235 South Union

Chehalis

MINDLIN RADIO CO. Arthur Mindlin

Ilwaco

HOTSPARK ELECTRIC CO.

Poulsbo

ERICKSON ELECTRIC CO.

Toppenish

WILLIAMS HARDWARE CO.

Cle Elm

M. W. DAVIS

Leavenworth

LEAVENWORTH GARAGE

Puyallup

PARSONS ELECTRIC CO.

Wapato

REX TIRE SHOP

Coupeville

DEAN MOTOR CO.

Lynden

HARTZELL HARDWARE CO. W. A. Hartzell

Raymond

RAYMOND DRUG CO.

Winslow

C. E. WALLACE

Des Moines

DES MOINES AUTO CO.

Montesano

DAVIDSON BROS. AUTO CO.

Sunnyside

ANUNDSON HARDWARE CO.

Yakima

YAKIMA HARDWARE CO. SCHURMAN-KEITH CO.

TOBE CONDENSERS

are favored by leading radio manufacturers, jobbers, dealers and users because they invariably give the ultimate in customer satisfaction.

For success in set building and set operation ask your dealer for

Tobe Condensers

A complete stock of all special and standard types are in our stock and available to your dealer.

HARPER-MEGGEE

Fourth and Blanchard

Distributors